



Viper

2025 Assembly Guide



Viper

2025 Assembly Guide



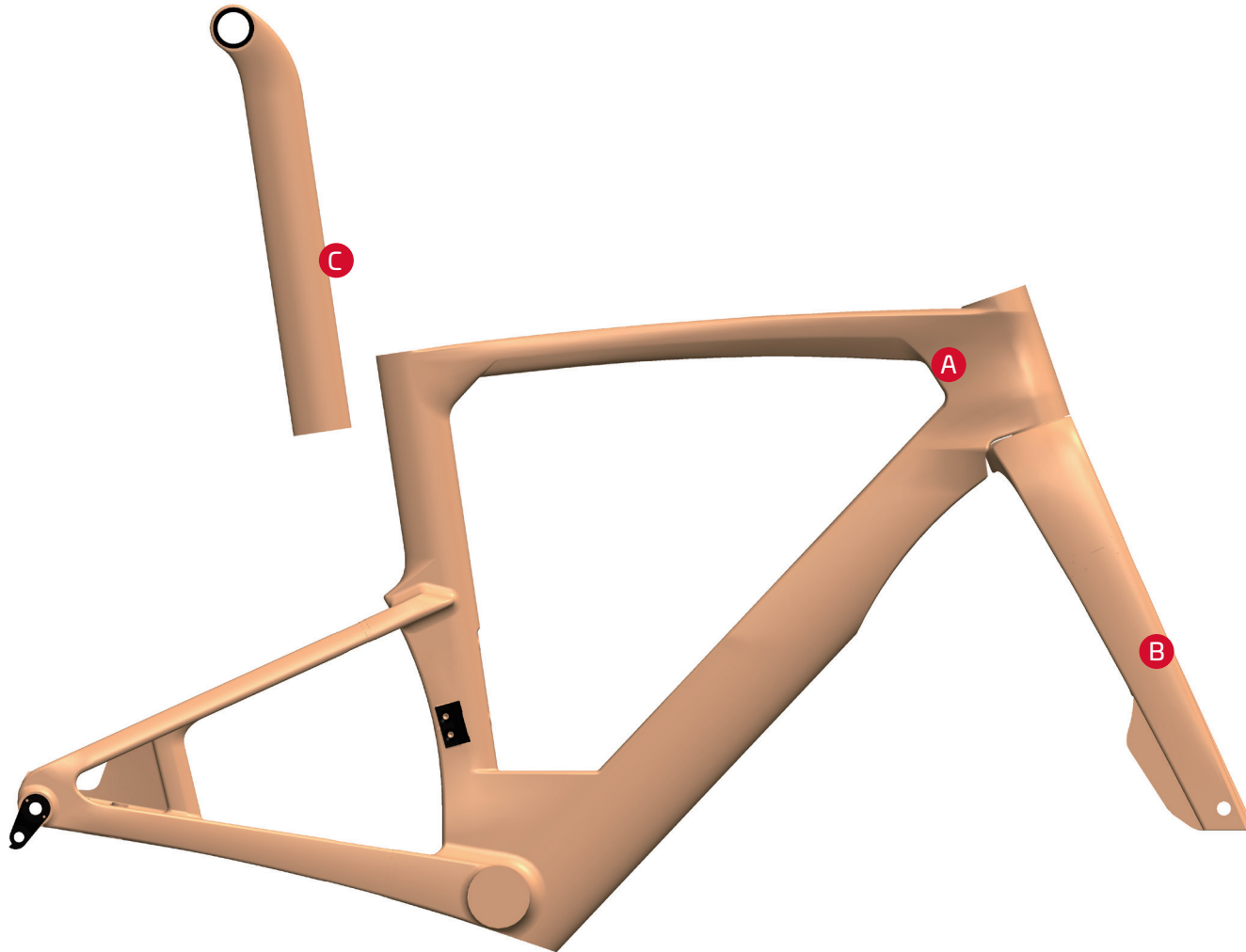


TABLE OF CONTENTS

1. Frameset Parts.....	4
2. Parts Included In the Box.....	5
3. A concept for assemble the cable integration bike.....	6
4. Headset Assemble.....	7
5. FSA SMR System (suite).....	8
6 Cables Map - Brake.....	9
7. Cables Map - Shiftings (electronic).....	10
8. Cables Map - Shiftings (mechanical).....	11
9. Cable Installation wirh Stem.....	12
10. Expander Plug.....	13
11. Seat Clamp & Mini Clamp.....	14

Viper

2025 Assembly Guide



1. Frameset Parts

- A** frame
- B** Fork
- C** Reversible Seatpost

Viper

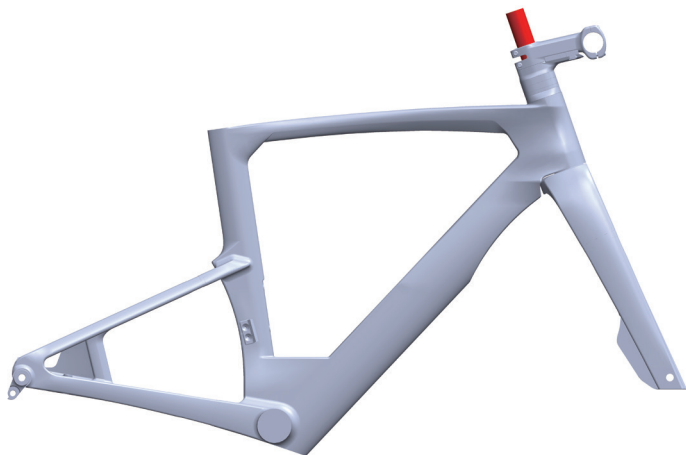
2025 Assembly Guide



2. Parts Included In the Box



- A Headset
- B Expander
- C Di2 battery adaptor
- D Seat Clamp
- E mini Clamp
- F Rear thru axle
- G Front thru axle
- H Grommet for Shimano Di2 wire
- I Grommet for SRAM eTap (empty hole)
- J Grommet for rear brake exit hole
- K foam tube for rear brake housing
- L Grommet for mechanical shift cable
- M FSA SMR Stem



Concept 1

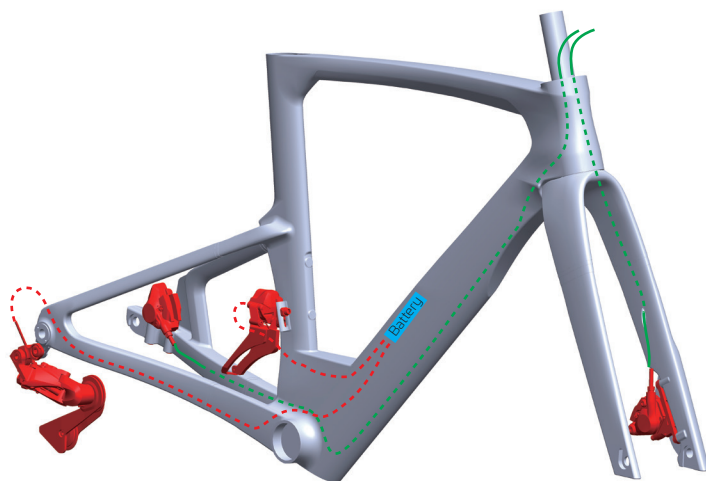
Based on the parameters of the bike fitting, retain the necessary stem spacer and pre-cut the length of the fork steerer.

Viper

2025 Assembly Guide

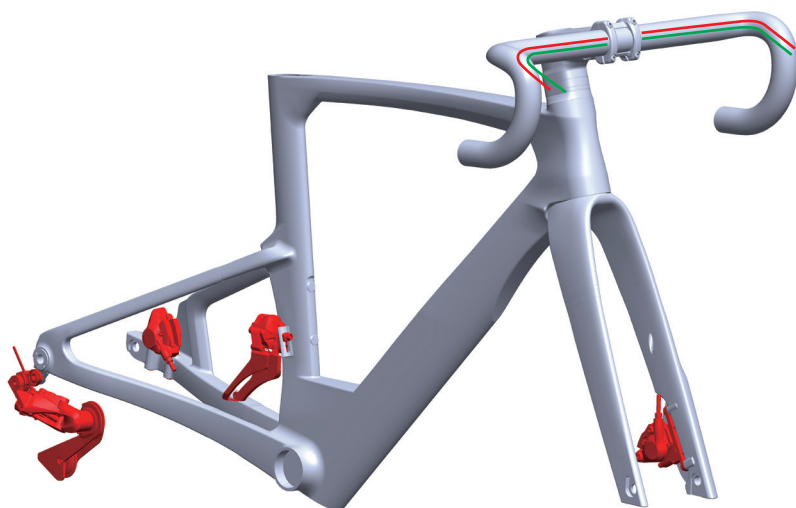


3. A concept for assemble
the cable integration bike



Concept 2

First, install the brakes and the front derailleur, the battery and rear derailleur, then leave the excess cables at the exit of the head tube.

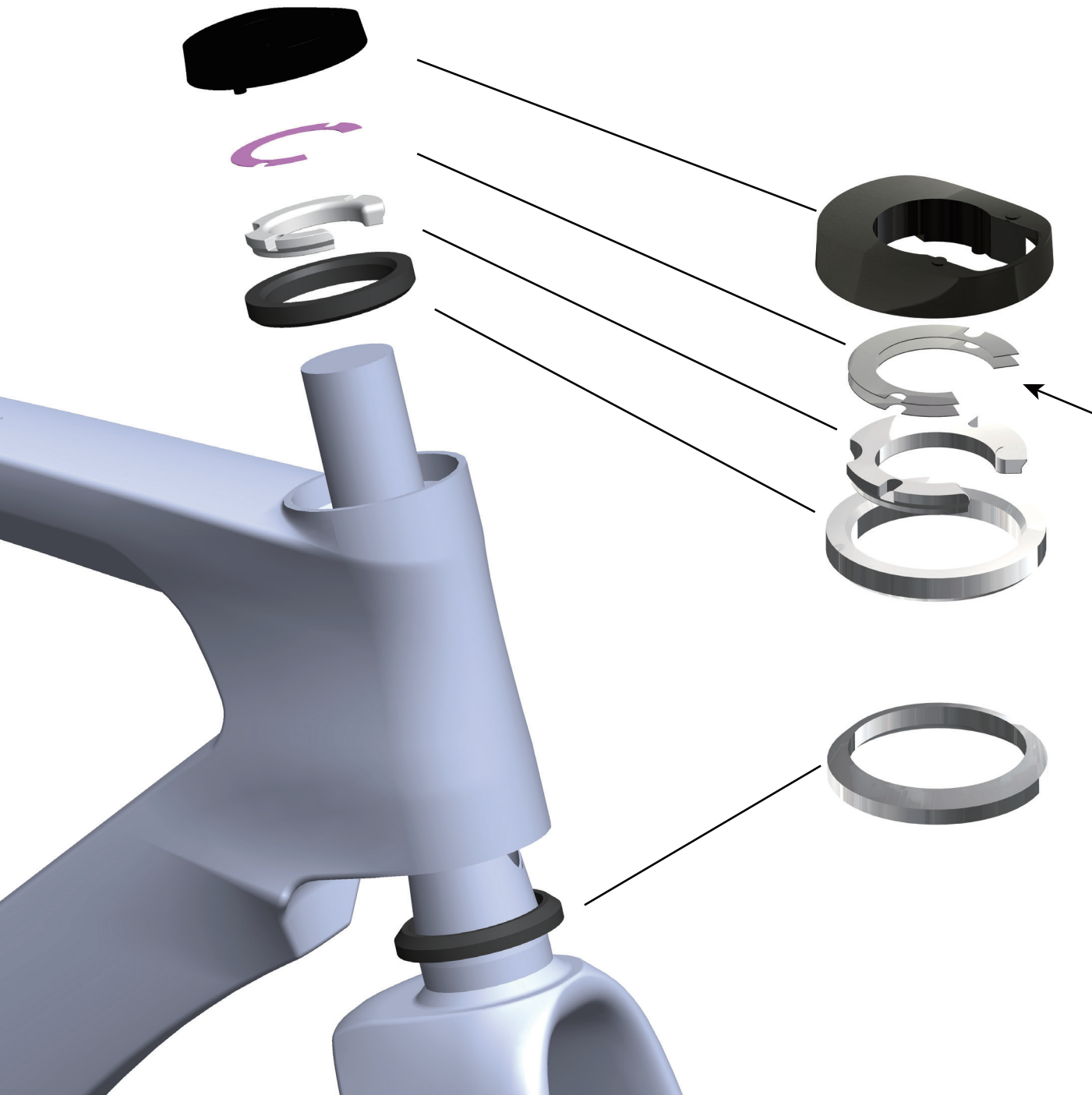


Concept 3

Finally, route the necessary cables through the stem to connect to the shift lever.



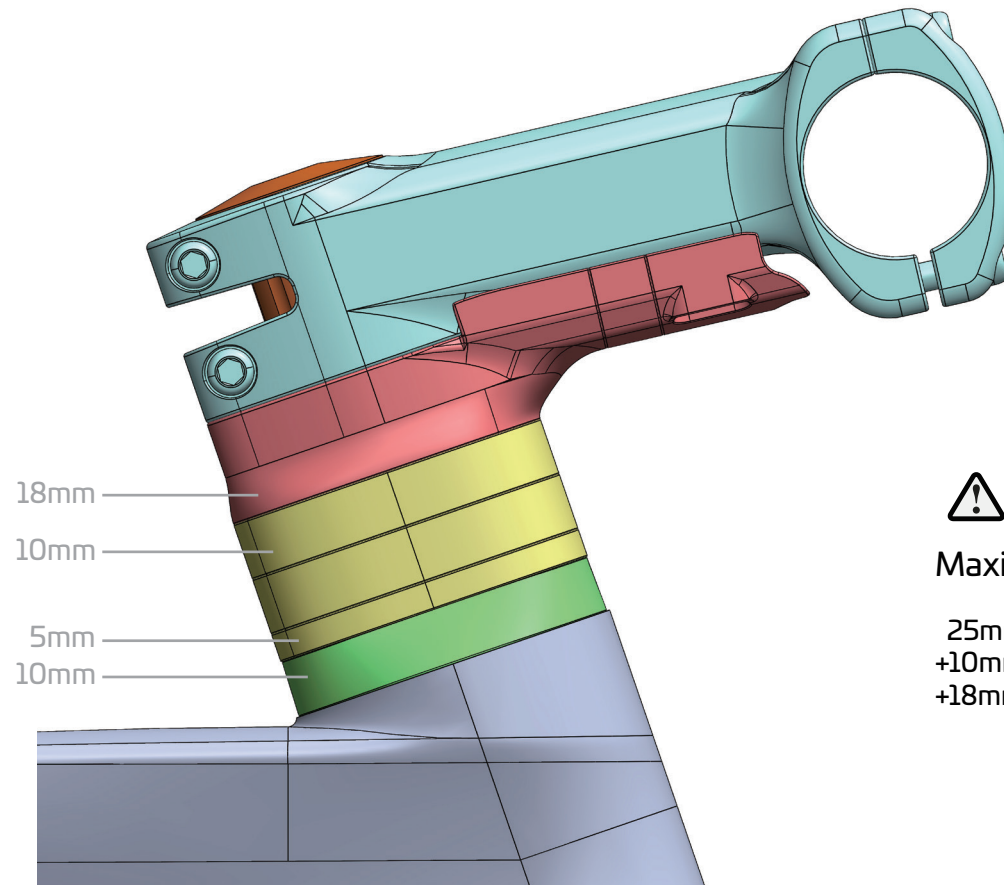
4. Headset Assemble



This spacer is used to adjust the gap between the top cover and the upper surface of the head tube

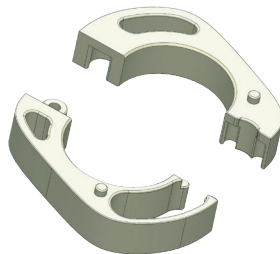


5. FSA SMR System (suite)



Maximum stack

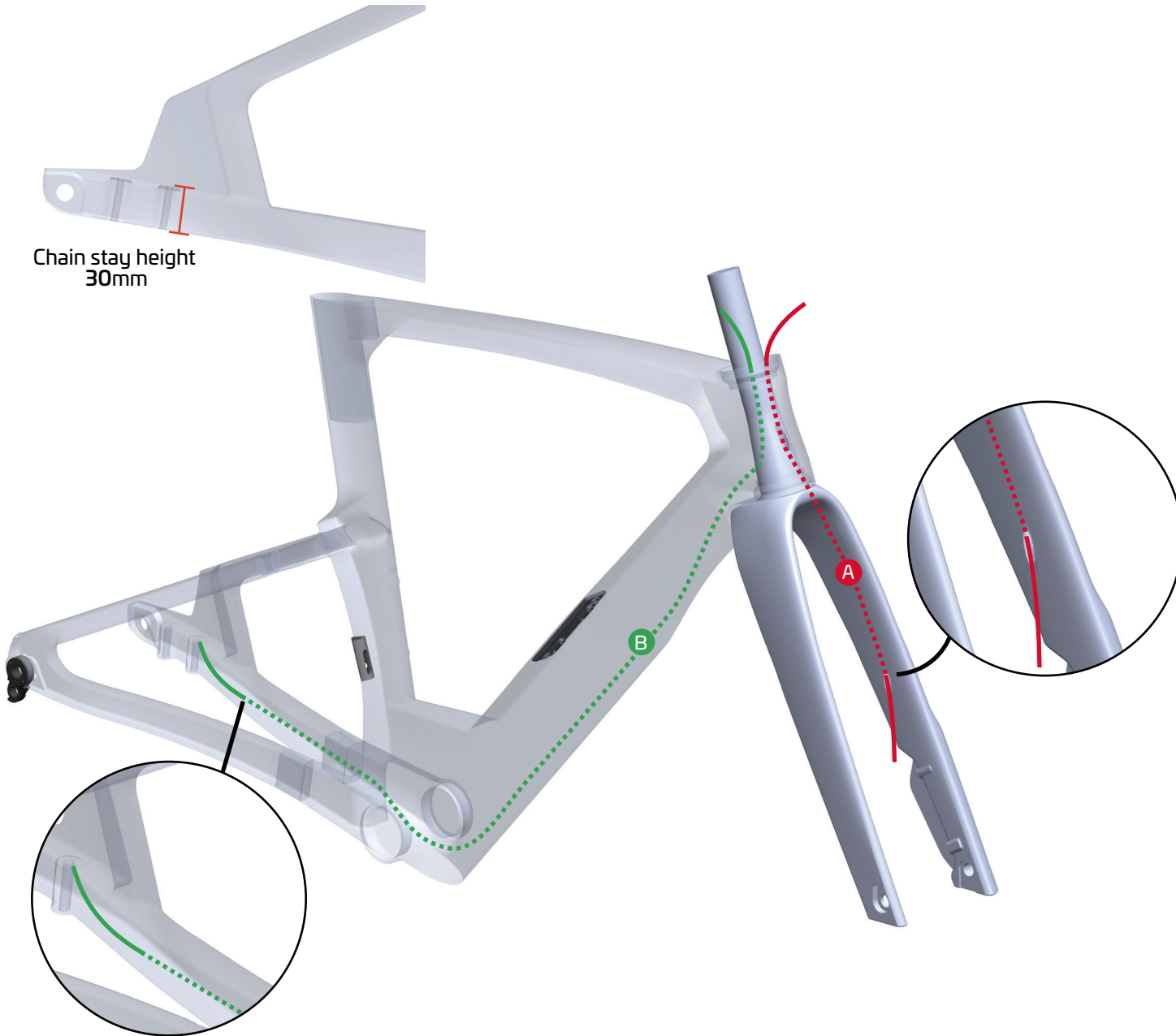
25mm Stem Spacer
+10mm bearing Top cap
+18mm Cable cover spacer



Two-piece Stem Spacers
allow for installation
or removal without re-cabling



Chain stay height
30mm



6 Cables Map - Brake

A Front Brake Hose

A single brake hose can pass through the fork steerer, so it doesn't require a connector bushing.

B Rear Brake Hose

If the rear brake is on the right hand, route the hose around the drive side of the fork inside the headtube.



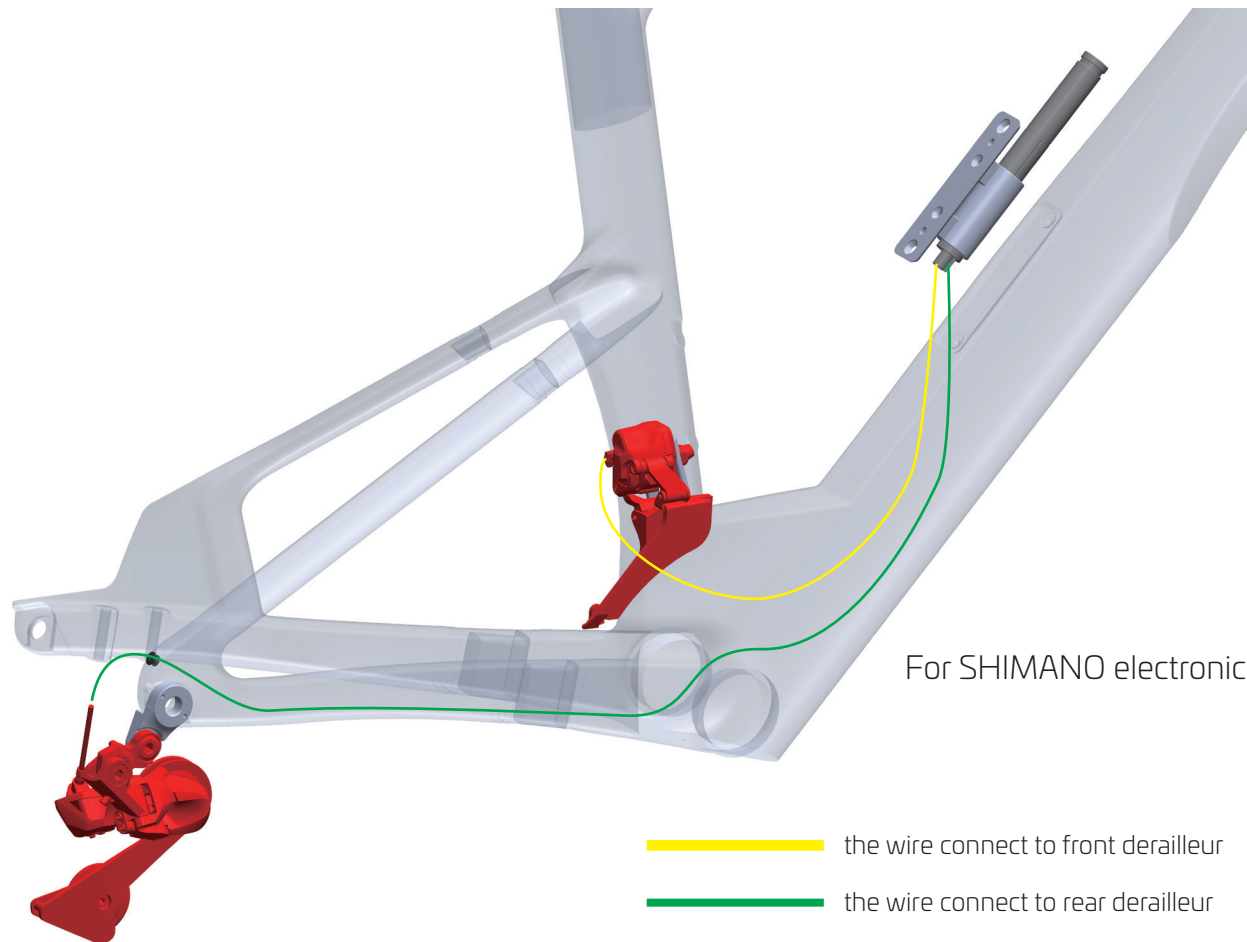
These routing illustrations are intended as installation instructions only. For both hydraulic and mechanical disc brakes, please refer to that component's website to find further information.

Viper

2025 Assembly Guide



7. Cables Map - Shiftings (electronic)

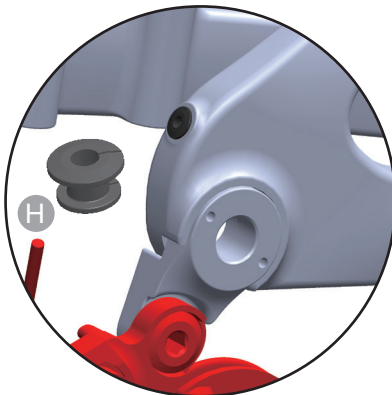


A Map Front Derailleur (electronic)

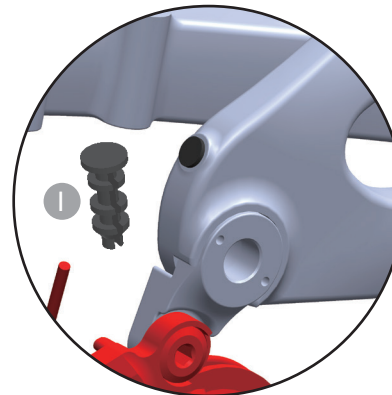
From the battery, guide it toward front derailleur exit hole (1).

B Map Rear Derailleur (electronic)

From the battery, guide it toward rear derailleur exit hole (2).



For SHIMANO electronic



For SRAM electronic

Viper

2025 Assembly Guide

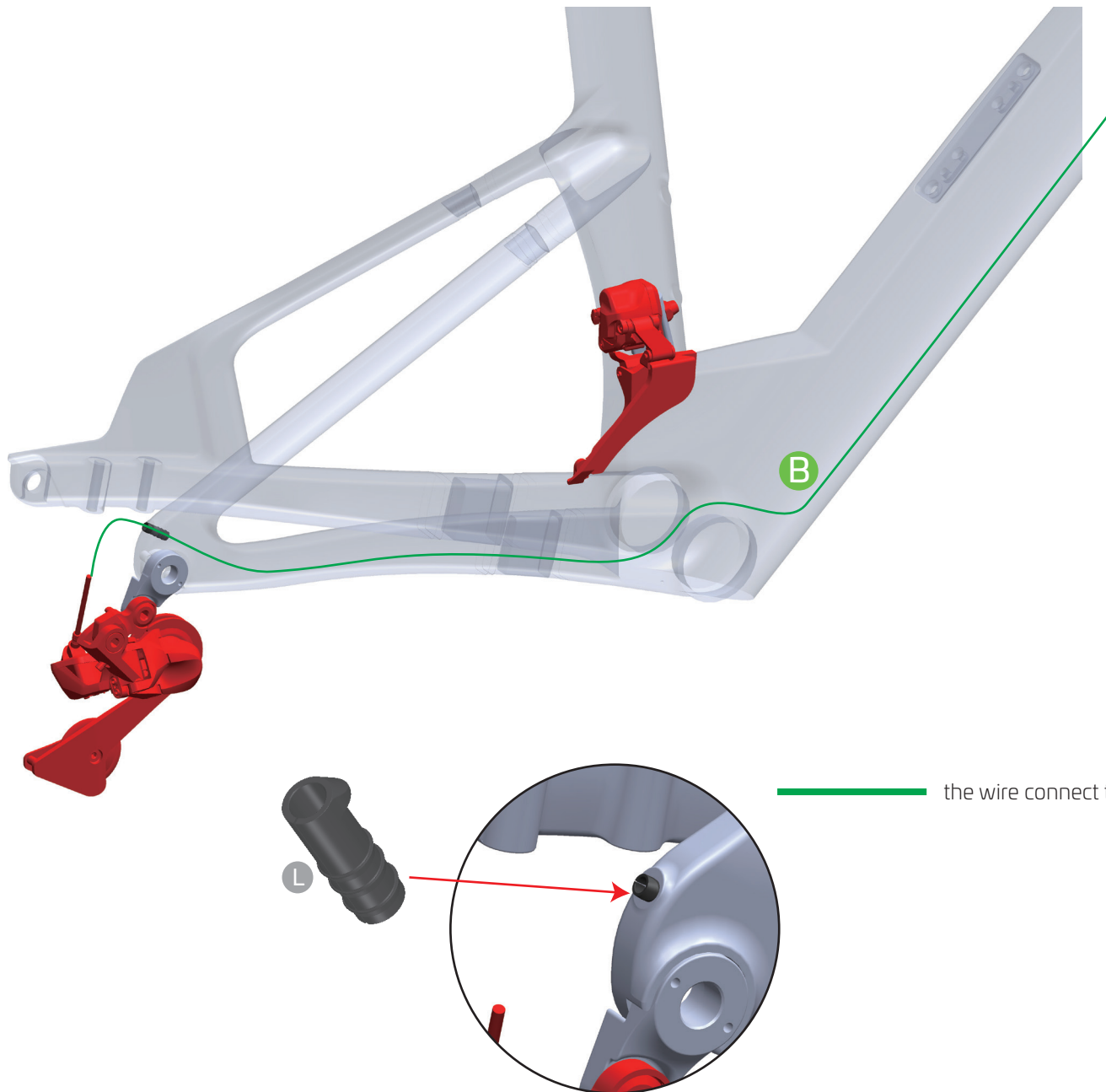


8. Cables Map - Shiftings (mechanical)

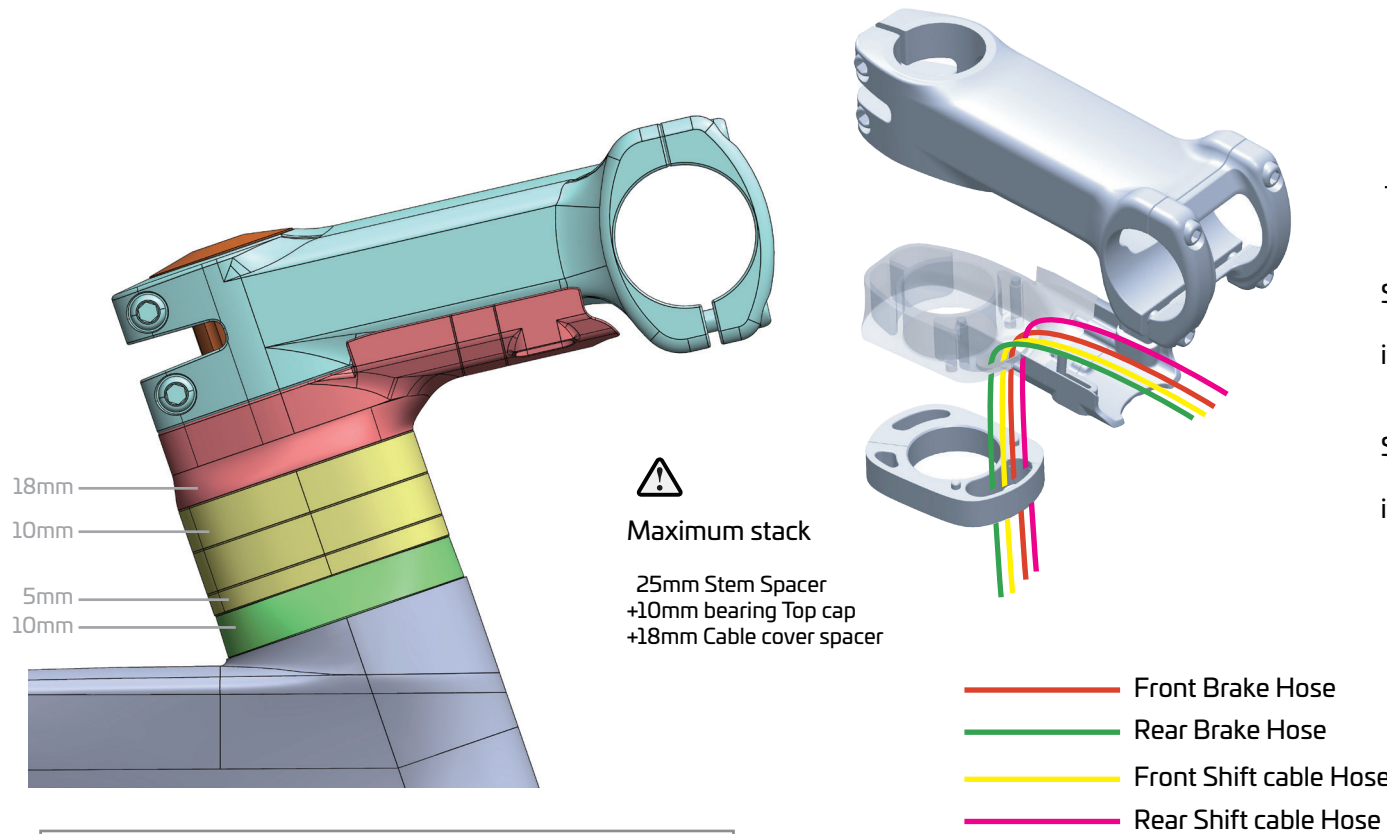
A When using 1 x setup, you can use this front derailleur cover designed for 1x.

B Map Rear Derailleur (mechanical)

From the battery junction box, guide it toward rear derailleur exit hole (2).



the wire connect to rear derailleur



9. Cable Installation with Stem

Situation 1:

if for Mechanical type, all cables connect to shift lever

Situation 2:

if for electronic type, brake cables connect to shift lever





← Top cap

10. Expander Plug



11. Seat Clamp & Mini Clamp

